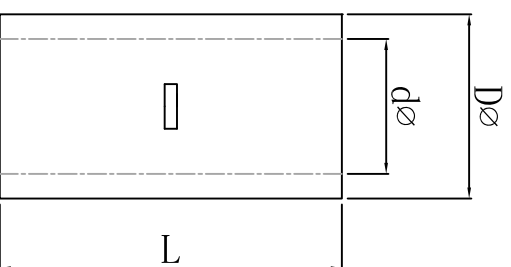
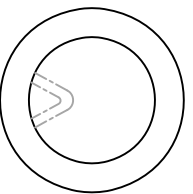


料号 material No.	品名 Parts Name	型号 Part NO.	导线截面 cable size (mm ²)	Dø	dø	L
40-BN 5.5	中间裸接头	BN 5.5	12-10 4-6mm ²	5.5	3.4	15



说明:
 材质: 紫铜, 镀白锌;
 颜色: 银白色



DIMENSION		TOLERANCES		DWG. BY		CHK. BY		DATE		APP. BY		DWG. NO.		UNIT	mm
0.0	0.00	±0.5													
FIRST ANGLE PROJ		A	NEW PART	<i>wallian</i>	<i>zy.wang</i>	<i>202105</i>					<i>wang zhiyan</i>				
LTR		REVISION RECORD	DWG. BY	CHK. BY	DATE	APP. BY	DWG. NO.	UNIT	mm						
LTR		REVISION RECORD	DWG. BY	CHK. BY	DATE	APP. BY	DWG. NO.	UNIT	mm						

未经许可不得修改和复印
 该知识产权属于技术质量部