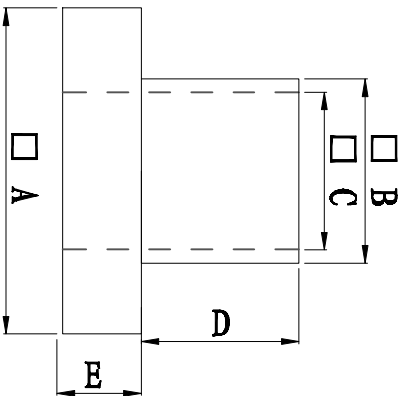
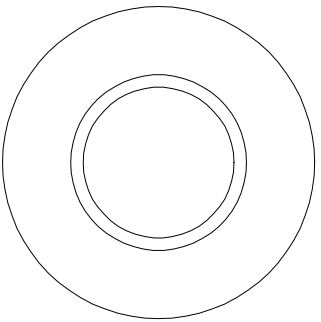


料号 Part NO.	品名 Parts Name	型号 Part NO.	尺寸 Dimension					备注
			A (mm)	B (mm)	C (mm)	D (mm)	E (mm)	
69-TW-53	电晶体垫片	TW-53	11.8	6.0	4.0	1.9	0.5	



- ◆ MATERIAL: PA66 V2/PBT/
PA46/PPS/PA66 V0
 - ◆ COLOR: NATURAL
 - ◆ UNIT: mm
- 用途: 锁于电晶体上,
避免晶体外壳与散热片间造成短路。



未经许可不得修改和复印
该知识产权属于技术质量部

DIMENSION	TOLERANCES	FIRST ANGLE PROJ				
		A	NEW PART	REV. BY	DATE	
0.0 0.00	± 0.3	LTR.	REVISION RECORD	DWG. BY	CHK. BY	

DWG. BY	CHK. BY	APP. BY	UNIT	REV.	DWG. NO.
<i>Lin Liang</i>	<i>Qullian</i>	<i>wang shiyuan</i>	mm	A	HIMA/OR-JZ-69-TW-53