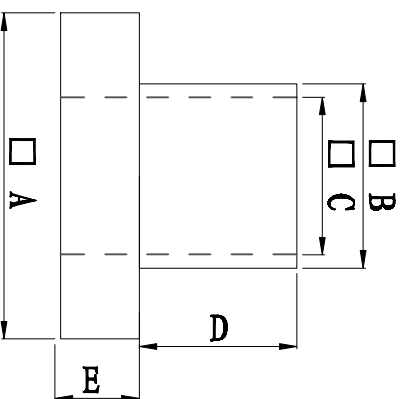
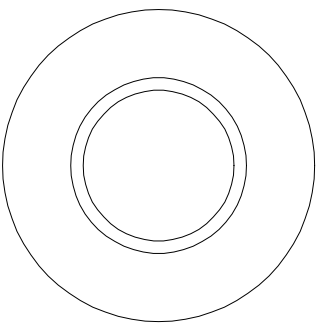


料号 Part NO.	品名 Parts Name	型号 Part NO.	尺寸Dimension					备注
			A (mm)	B (mm)	C (mm)	D (mm)	E (mm)	
69-TW-12	电晶体垫片	TW-12	9.5	6.3	4.1	0.8	1.7	



◆ MATERIAL: PA66 V2/PBT/

PA46/PPS/PA66 V0

◆ COLOR: NATURAL

◆ UNIT: mm

用途: 锁于电晶体上,
避免晶体外壳与散热片间造成短路。



未经受权不得修改和复印
该知识产权属于技术质量部

DIMENSION	TOLERANCES	FIRST ANGLE PROJ			
		A	NEW PART	DWG. BY	CHK. BY
0.0	± 0.3	LTR.	REVISION RECORD	DATE	
0.00					
DWG. BY	CHK. BY	APP. BY	DWG. NO.	UNIT	mm
<i>liu liang</i>	<i>caulicau</i>	<i>wang shiyuan</i>	HIMA/OR-JZ-69-TW-12		