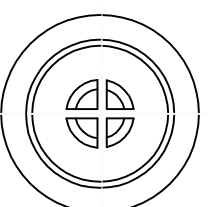
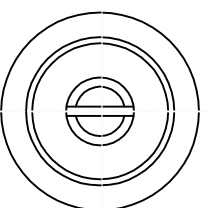
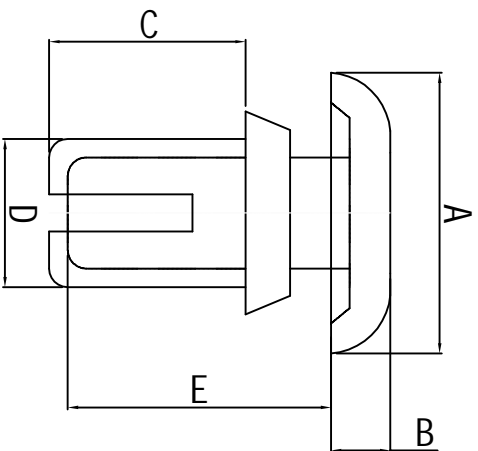


料号 Part NO.	品名 Parts Name	Hole Dia 孔径	Panel Thick 机板厚度	A	B	C	D	E	拉拔力
34-R3035	尼龙铆钉 R3035	3.1	1.0-2.0	6.4	1.6	3.5	3.0	5.1	8KG



- ◆ MATERIAL: NYLON 66 (UL)
 - ◆ FLAME CLASS: 94V-2
 - ◆ COLOR: NATURAL/BLACK
- 公差要求: 未标注公差±0.5



未经许可不得修改和复印
该知识产权属于技术质量部;

DIMENSION	TOLERANCES	DWG. BY				UNIT		
		NEW PART	CHK. BY	DATE	mm			
0.0	±0.5	A	zy.wang	2011/28	liu liang	UNIT	mm	
0.00					sullivan	REV.	A	
FIRST ANGLE PROJ		LTR.	REVISION RECORD	DWG. BY	CHK. BY	DATE	APP. BY	DWG. NO.
							wang zhiyan	HIMA/OR-JZ-34-R3035

HIMA 苏州惠华电子科技有限公司